



Get Visual About IT

See netTerrain Logical in action today



netTerrain Logical

Network diagrams and mapping. IT inventory management. Circuit and cable traces. System and application views. Enterprise architecture. To gain insights and efficiently manage and document your network, these are some of the things that matter to you.

Traditional drawing tools can be used to represent networks and represent your IT infrastructure, but only by hand. Monitoring tools discover the network, but leave you with a partial view and poor visualization capabilities. Because network engineers are visual people, netTerrain Logical gives you the best of both worlds: detailed and flexible visualization coupled with automated network mapping.

netTerrain Logical provides a centralized, multiuser, browser-based platform to visualize your networks, systems and applications. easy-to-use navigation renders powerful hierarchical and subcomponent diagrams of your entire IT landscape

You will gain: greater visibility, control and governance to improve capacity planning, reduce troubleshooting times, optimize the documentation process for better compliance and improved overall service levels.



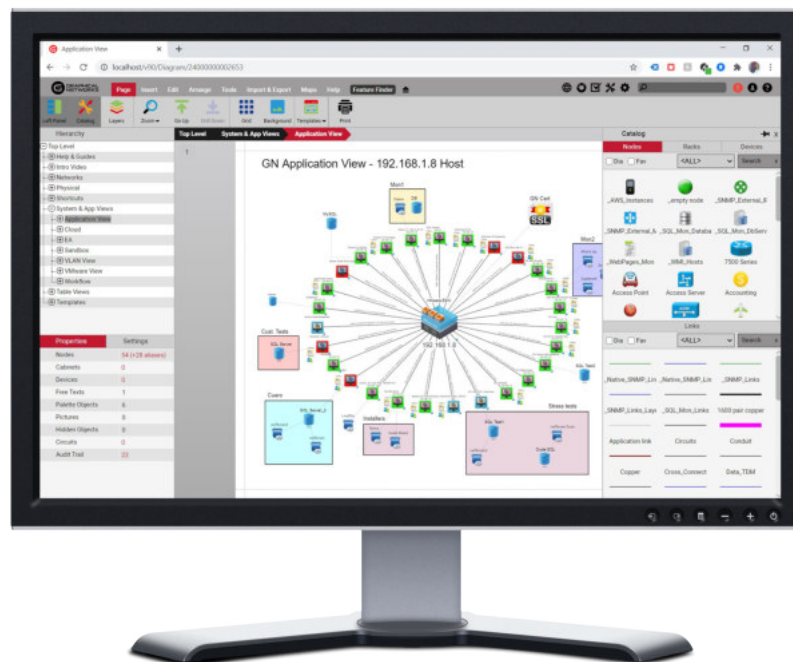
Optimize your Network Mapping and Documentation without Breaking the Bank.

Visualize your Networks, IT inventory, Systems and Apps from one central place. Improve IT utilization and streamline capacity planning. Meet SLAs and reduce downtime costs by decreasing your mean time to repair. Reduce risks and ensure compliance with better control and governance. Eliminate the guesswork. Reduce security breaches and data loss from employee churn. Significantly reduce downtime and troubleshoot faster. Automatically generate your diagrams. Lower the costs of audits and make them easier to complete with automated mapping.

Automate, Visualize and Optimize Your Network Documentation

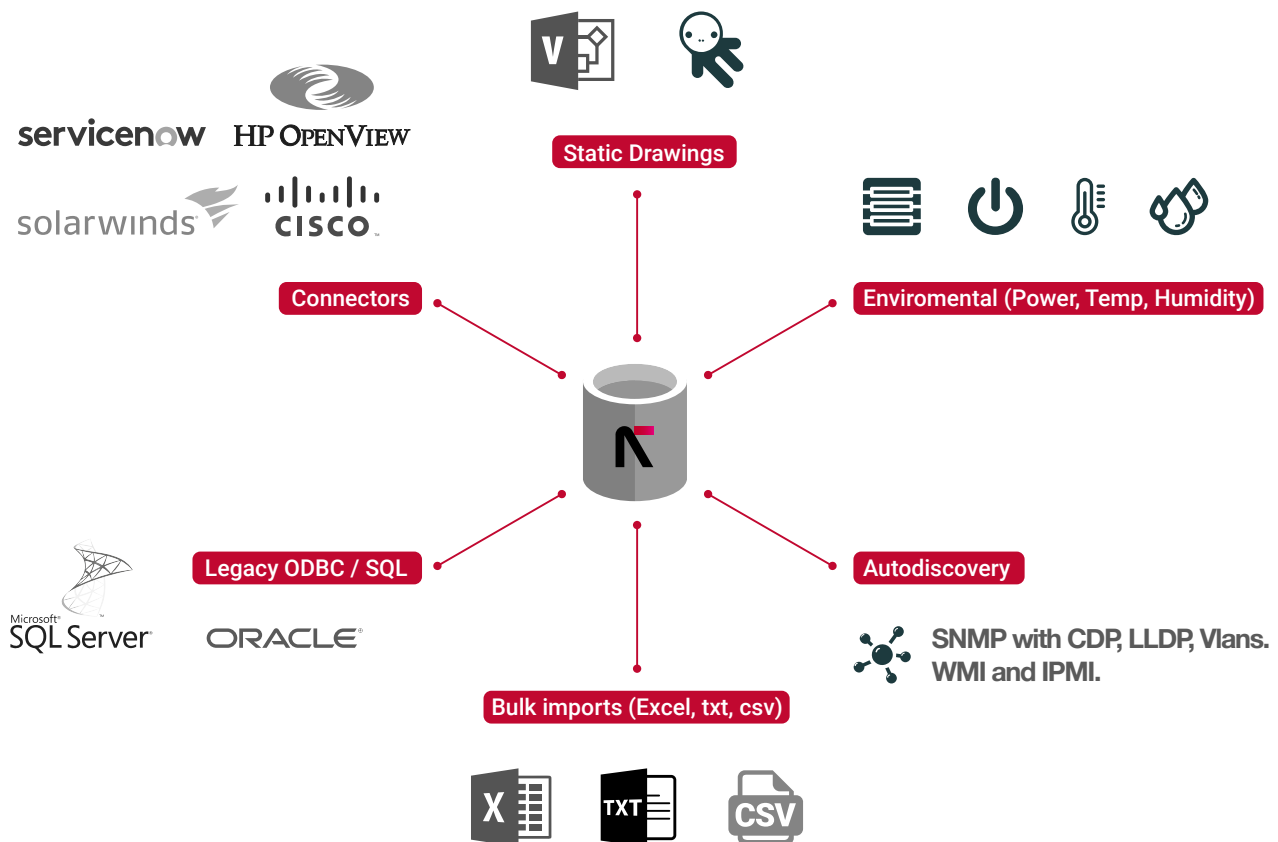
netTerrain Logical's feature-rich, robust visualization capabilities provide a smarter way to gain IT insights so that you can make better decisions and deliver enhanced business value.

- Robust discovery engine for devices, ports and links.
- Connectors to any third party data source for further automation.
- Physical and logical views of your networks, systems and apps.
- Inventory and Asset management for any IT and non IT elements.
- Cable and circuit management - from layer 0 to 7.
- Map VMs and application visualization.
- Capacity planning and forecasting with full dashboard and reporting engine.



What Makes netTerrain Stand Out

- **Hierarchical Diagrams:** they are at the heart of the tool and don't require Visio or third-party applets.
- **The Best Usability:** we are obsessed. We believe a DCIM tool should maximize efficiency, not make things harder on you.
- **Trivially Simple Modeling:** other vendors take weeks or months to deliver them: we train you how to do it yourself in minutes or send device models back within 24-48 hours!
- **Flexibility:** add or remove property field attributes, change visual cues, create business rules and apply them to thousands of objects in seconds.
- **Dashboard and Custom Reporting:** create your own reports. Don't just depend on the reports that are provided to you.
- **Modern Platform:** netTerrain uses HTML5-based browser technology for a thick client-less and plug-in less multiuser experience.
- **Worry-Free Integration:** that's right - we create adapters to any commercial tool you already have for increased automation at no cost.
- **Feature-Rich Discovery:** we bring in any assets. Ports. feature-rich layer 2/3 links and much more using protocols such as SNMP. IPMI, SSH, OLE and others.
- **Granular Security:** 8 different access roles (AD and FIPS compliant) configurable on a per diagram basis puts you in control.



Software

MS SQL Server 2012, 2014, 2016 or 2019
Windows Server 2012, 2016, 2019
MS IIS 8.0 or better
NET Framework 4.5 or better

Hardware

Intel i7 Processor
10GB Free Space
8GB RAM

Contact us to request a demo

www.graphicalnetworks.com
814 W. Diamond Ave., Suite 370
Gaithersburg, MD 20878
Phone: 1-240-912-6223
Fax: 1-240-912-6339
sales@graphicalnetworks.com

