



# netTerrain Logical

Get the information you need, when you need it

## Ready to save money, troubleshoot faster, eliminate headaches? Visualize your entire IT landscape with netTerrain Logical.

### Visio and spreadsheet headaches?

Access real-time diagrams in a centralized repository:

- Create real-time network topology maps and place assets inside racks, rooms, and floors
- Automatically map the network by leveraging netTerrain's SNMP discovery engine
- Connect to any data source with REST APIs, including pre-built connections to 3rd party applications such as AWS, Azure, Service Now, Solarwinds Orion, Spectrum, VMWare, etc.

### Sick of troubleshooting taking too long?

Always have actionable insights on deck:

- Quickly identify issues, and what is impacted, with network discovery and polling statuses
- Search for information about any device or connections in seconds
- Understand exactly how devices are connected by running circuit layout records

### Assets and inventory growing out-of-control?

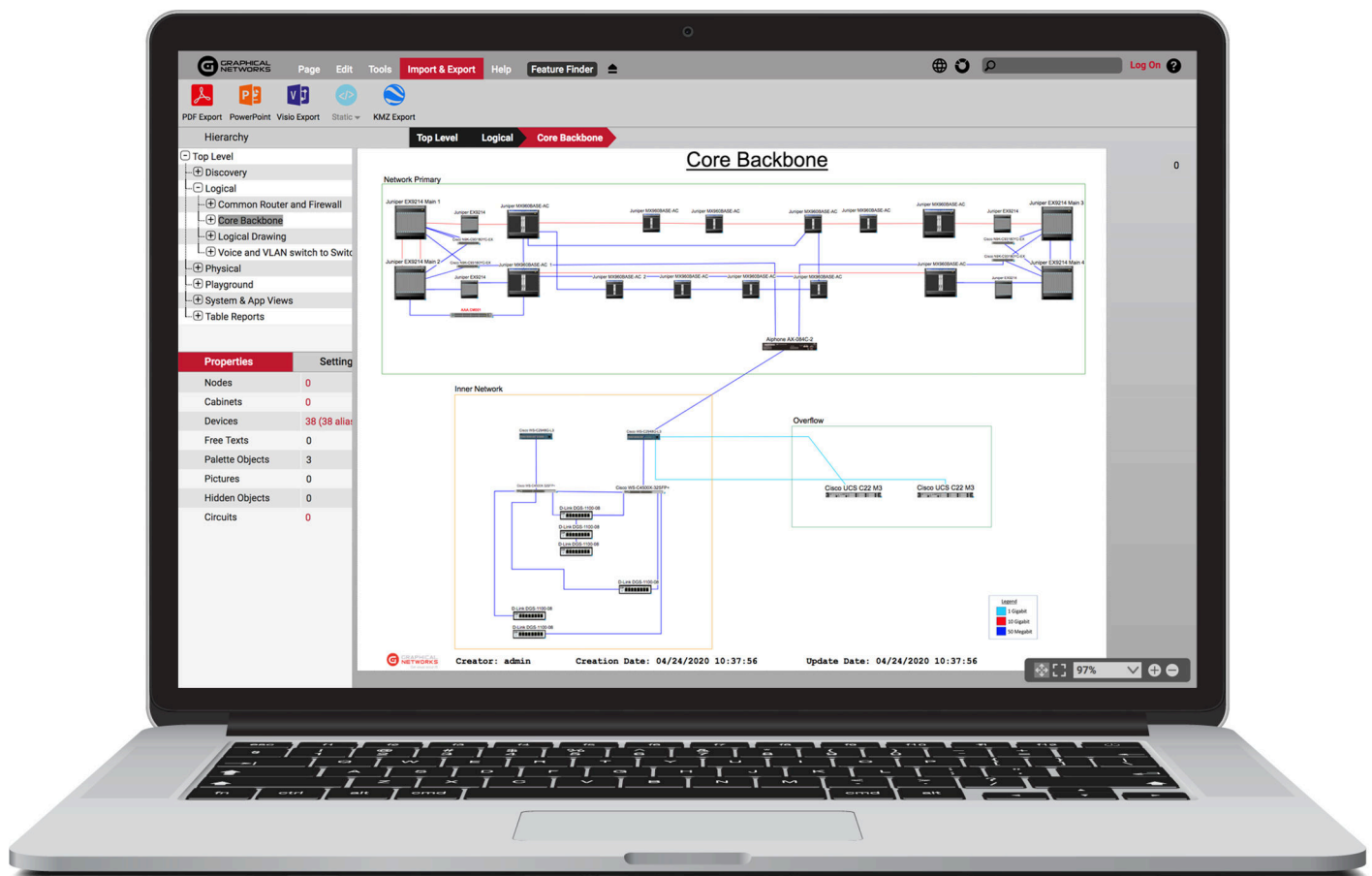
Track your entire inventory and network assets:

- Know what you have with easy-to-use reports
- Stay up-to-date on the servicing of equipment
- Track costs, warranty, and vendor info, license numbers, patches, and contact information by adding data fields to any objects

### Held hostage by a lack of information?

Stop managing in the dark:

- Collaborate with colleagues, stakeholders, and management on diagrams and data
- Stop information loss from employee churn
- Find the information you need by searching from just one place
- Visualize asset usage, connectivity, and more with dashboards



## About Graphical Networks

Our team has managed networks and data centers ... and we've been creating IT visualization software for over two decades. We're obsessed with usability and crafting software that delivers on its promise of ROI.

### Software Requirements:

MS SQL Server 2012, 2014, 2016 or 2019  
Windows 2012, 2016, 2019 Server MS IIS  
8.0 or better  
NET Framework 4.5 or better

### Minimum Hardware Requirements:

Intel i7 Processor  
10GB Free Space  
8GB RAM

### Licensing Options:

On-premise yearly licenses  
Perpetual licenses  
netTerrain Cloud

With netTerrain, documentation and visualization are easy. Access powerful hierarchical drill-down diagrams of your entire IT landscape.

*"netTerrain is easy to use. Frequent software updates are loaded with new features that focus on usability. The software integrates well with our internal apps -- giving us data-driven diagrams. Excellent customer support alongside detailed documentation."* - Tim L, Network Engineer



Graphical Networks, LLC.

W: +1.240.912.6223

info@graphicalnetworks.com

www.graphicalnetworks.com

814 W. Diamond Ave Ste 370, Gaithersburg, MD 20878