



FED UP WITH VISIO AND SPREADSHEETS?  
NEED A BETTER WAY TO DOCUMENT YOUR  
NETWORK?



FRED KOH  
GRAPHICAL NETWORKS



# TABLE OF CONTENTS

- 03** Are you struggling with....?
- 05** What you can do with netTerrain...
- 07** How netTerrain helps users like you...
- 09** How netTerrain delivers ROI...

# Are you struggling with....?

Not documenting the network and struggling to find information? Using Excel and Visio and finding it's always out-of-date?

Organizations looking for a better way to document their network are fed up spending unnecessary money for new equipment, are sick of taking too much time with deployment of their network, trying to find information quickly and taking too long to troubleshoot an issue. Does any of these items relate to you? Good news: there is a better way to deploy the network, save money, speed up troubleshooting, and locate vital info.

## Troubleshooting

Wasting time hunting down information you needed hours ago? Fielding angry emails and phone calls while you're trying to resolve an outage or incident? Is your boss breathing down your neck?

Why downtime costs you money:

- Lost revenue from customers
- SLA penalties
- Decreases employee productivity
- Affects company reputation

When you're troubleshooting without the help of automated network documentation, it could be compared to trying to find a needle in the haystack.

## Costs

Are you struggling with downtime, stranded assets, SLAs not being met, zombie servers and zombie assets, spending too much IT equipment that turns out to be redundant, and so on?

Some costs for not properly documenting your network assets, results in:

- Unused network ports
- Underutilized, switches and routers
- Cables, circuits
- Extra licenses, applications and beyond

1 in 3 servers is a zombie; the average cost of an hour of downtime is \$164,000 -- that's per hour.

Without proper network documentation in place, organizations often end up paying for far more than they would with an automatic documentation solution in place.

## Poor Network Planning

You can't plan what you can't manage...and you can't accurately manage your existing network without automated

network documentation software.

Networks are always changing and expanding. How can Network teams plan for additional capacity and new applications (while ensuring that the network is ready)?

When you don't know what you have, or where it all is -- it's all but impossible to cost-effectively plan for capacity.

### Security Risks

How can you properly secure your network when you don't know where the entrances/vulnerabilities are? How can you comply with federal and industry regulations when you can't answer crucial questions about the network?

How could someone in charge of their network be able to secure the network if they have no idea how the network is connected, or what's on the network, or the equipment being used to run the network?

Depending upon which industry you are in, you may be subject to strict regulations and compliance requirements -- which are simply impossible to meet without the right equipment.

# NEED DOCUMENTATION? ARE YOU FED UP?

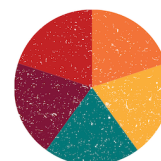


### TROUBLESHOOTING

Wasting time hunting down information you needed hours ago? Fielding angry emails and phone calls while you're trying to resolve an outage or incident? Is your boss breathing down your neck?

### COSTS

Are you struggling with downtime, stranded assets, SLAs not being met, zombie servers and zombie assets, spending too much IT equipment that turns out to be redundant, and so on?



### POOR NETWORK PLANNING

You can't plan what you can't manage...and you can't accurately manage your existing network without automated network documentation software.

### SECURITY RISKS

How can you properly secure your network when you don't know where the entrances/vulnerabilities are? How can you comply with federal and industry regulations when you can't answer crucial questions about the network?



SOURCE: WWW.GRAPHICALNETWORKS.COM

# What you can do with netTerrain...

## Generate Logical and Physical Network Maps



Use netTerrain to create network topology maps of the network in seconds -- and easily create physical views of your network racks and put them in their associated telecom room, data center room, office floors, and so on.

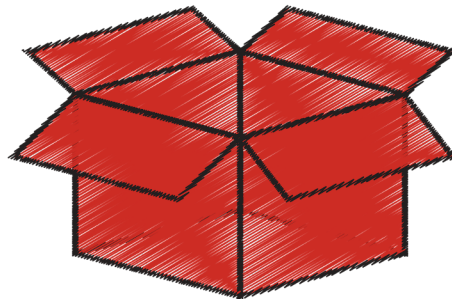
## Discover Anything



We're a company that's obsessed with usability. netTerrain comes with comprehensive SNMP discovery to automatically discover the network and generate web-based diagrams.

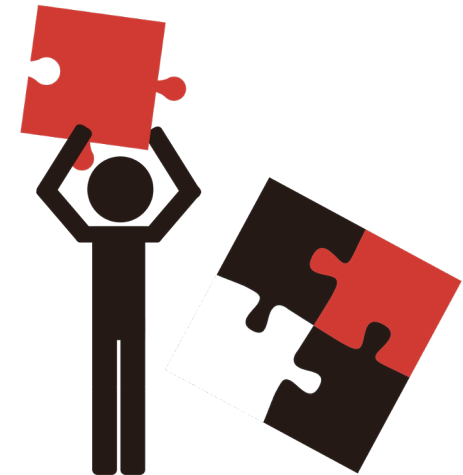
## Software that Works Right out of the Box

With netTerrain, you don't need to endure a prolonged onboarding process or the additional expense of a fleet of consultants.



## Connect Everything

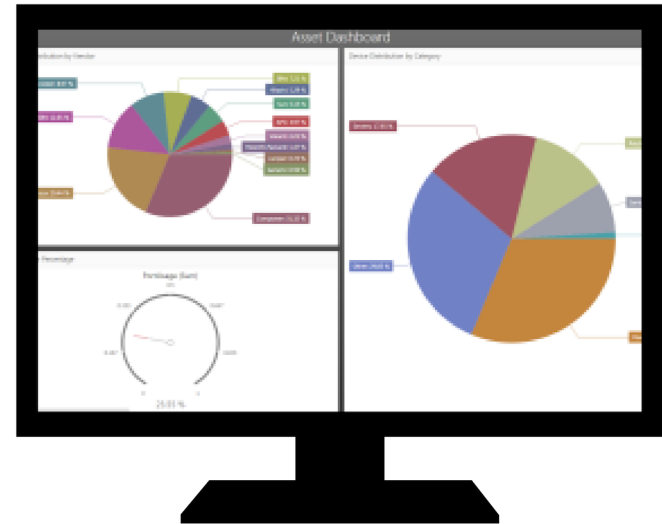
Have third-party data? That's easy to integrate with netTerrain. Connect to third-party applications such as Solarwinds Orion NPM, CA Spectrum, Service Now (and many more)-- and other applications utilizing Web Services API's.



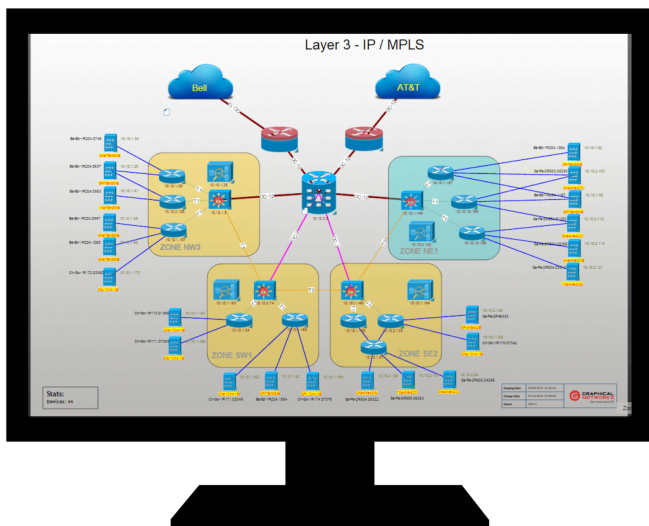
## Get Actionable Insights

Data is only as good as it is actionable -- to ensure you get the most ROI out of netTerrain, we offer a full suite of reports and a customizable dashboard.

Easily get management-style dashboard reports that make data-driven decision making a breeze.



**DASHBOARD REPORTS**



**LOGICAL TOPOLOGY MAPS**



**PHYSICAL TOPOLOGY MAPS**

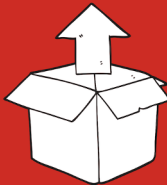
# How netTerrain Helps Users Like You...



## **Navigate from One Central Place**

"netTerrain is an essential tool for us to consolidate and find all our Network information. It allows the entire networking staff to graphically navigate our IT documentation from one central place."

Daniel Guimenez, IT Infrastructure Unit Schandy



## **Works Right Out of the Box**

"We were able to start using netTerrain right away. It's simple, easy-to-use and user-friendly: no tutorial needed. Before netTerrain, we had to travel to the different campuses where our equipment is located. Now, we can see our network from a web-browser. We have a vast amount of devices and netTerrain makes locating these devices very simple. "

UNSW IT Team



### **Excellent Support; Powerful Performance**

"We have been using netTerrain Logical in our telecommunications department since 2013. Around 60 users access netTerrain in various capacities to document and manage the railroad network infrastructure and services that run on it. We have been very pleased with both the usability and the powerful performance of the tool; the technical support is excellent."

Paz Martinez Zurdo, Telecommunications Engineer, ADIF



### **Saves Time and Money**

"The Java-based system we had for our cable and asset management just wasn't cutting it anymore. From installation to implementation and adoption, netTerrain delivered. netTerrain saves us time and money – and simplifies our work with its incredible usability. Without question, it's more efficient, faster and cost-effective than the previous system we had."

Mario Kisslinger, Solution Architect

# How netTerrain Delivers ROI...

## Use netTerrain to Troubleshoot Faster



When a network incident occurs, such as a device going down and no longer performing its functions, netTerrain alerts you to the issue and shows you, through visualization, exactly which device is down and everything else that's been impacted.

In seconds, see network incidents for any connected element in seconds (including links and circuits) -- what they are connected to, and which other devices are down as a result.

## Use netTerrain to Cut Costs



netTerrain results in significant cost savings for our users across their entire IT landscape. You can't cut costs effectively if you don't know what's creating them in the first place.

Faster troubleshooting means reduced downtime and reduce costs. With better network documentation, you can prevent incidents from happening in the first place. When they do happen, netTerrain lets you know where everything is, and what's connected to what -- along with the documentation for each asset (vendor information, licenses, patches, and so on) -- so you can get the network back and up running in far less time.

Knowing what you have and where it all is allows you to rescue stranded assets and fully decommission them (and stop them from drawing power but not performing any functions).

## Use netTerrain to Plan for Better Network Planning



With netTerrain, you can get a handle on your usage and capacity. Drill down on a per-site basis to get information on the specific card usage, port usage and overall assets per site.

This gives you an idea of what do you have, where you have it and what percentage of that is in use.

Without a proper inventory of your IT assets, budget allocation suffers due to lack of data on growth rates. With the proper system in place, you can plan in advance what really needs to be purchased and deployed instead of buying unnecessary hardware, pile up on VMs or allocate extra bandwidth that was never needed to begin with.

Armed with intelligence about your usage, you can really take control of your planning. If you see, for example, that you are running low on ports, you can start thinking about planning to purchase new equipment as needed.

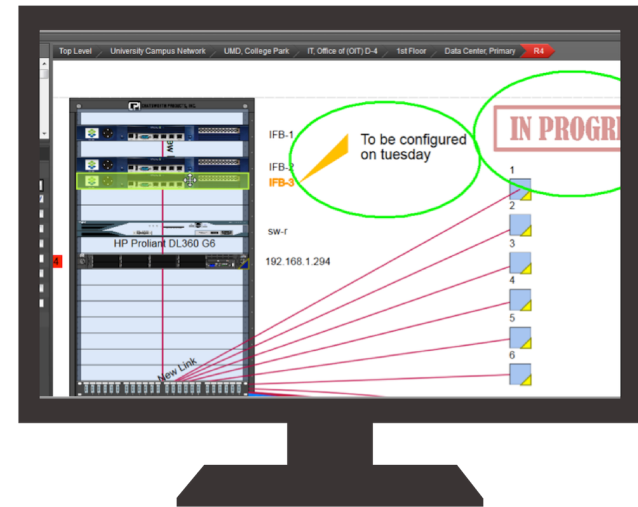
Need to install a switch or a router? Open up your dashboard and look around. In your netTerrain dashboard, you can easily view the overall dashboard report and then drill down to the actual location to see overall statistics at a data center. You can go further here and drill down to the cabinet level to see which ports are free or what's connected. You can plan the installation without wasting any time getting out to a site only to find you don't have any ports free.

### Use netTerrain to Keep the Network Secure & Compliant



When you know and can visualize what you have, where it is and how it's all connected, you can best secure your network. netTerrain gives you the crucial information you need to do so.

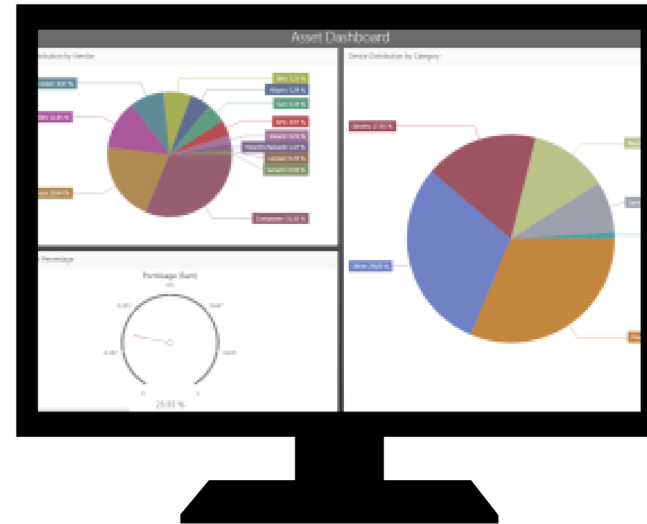
With documentation in place, you will know your system's point of entry and exits, can easily review your security -- and ensure your equipment is updated with the latest security patches. By keeping the network properly documented and secured, you stay in compliance with federal regulations and industry standards.



# Ready to see netTerrain in action?

Have more questions?  
Want to see how netTerrain  
can transform your projects?

Schedule a demo today!  
[graphicalnetworks.com](http://graphicalnetworks.com)



GRAPHICAL NETWORKS  
814 W. DIAMOND AVE  
GAITHERSBURG, MD 20878 USA  
+1-240-912-6223  
[WWW.GRAPHICALNETWORKS.COM](http://WWW.GRAPHICALNETWORKS.COM)