

Editorial

Roadmap Status

2026 netTerrain User Summit

netTerrain Feature Highlight

Customer Success Story

Past & Upcoming Events

Word Search

Team Member Spotlight

Lootbox Rewards

Conclusion

# Editorial

2025 marks a major milestone: netTerrain 10.0 - the first in our 10.x series, dedicated to the creators and problem-solvers behind netTerrain.

The “starry” cover above features Hedy Lamarr, whose work with George Antheil on frequency-hopping spread spectrum helped set the stage for Wi-Fi, Bluetooth, and other wireless innovations.

## Software Update: netTerrain 10.0

netTerrain 10.0 launches both major and minor improvements. To upgrade, log in as an admin and click Request software upgrade (or open a support ticket).

This release delivers major upgrades such as time-series performance monitoring for SNMP-enabled devices, a new Grafana-based reporting engine, integrated and distributed discovery, a refreshed interface, built-in IP Address Management, SSO/SAML 2.0, a new notification engine, and AI-based search (beta). See the Roadmap section in this newsletter for the rundown on version 10.0.

## Engineering

With 10.0 in your hands, our engineers are already hard at work on version 10.1. Joined a virtual meetup lately? You may have spotted one of our engineers during Q&A—proof we do let the devs out of the lab now and then.

## Customer Success

Running a campus the size of a city is no small feat. At Notre Dame, netTerrain now helps IT manage infrastructure-saving hours, improving audits, and reducing field trips. Check out the spotlight in this newsletter.

## Sales Update

This quarter was strong: we welcomed many new customers including Georgia-Pacific, Kern County, and Marion County. Big shoutout to Aidan—who joined our sales team this summer.

## Upcoming Events

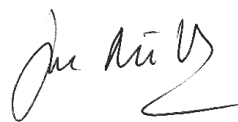
Virtual sessions roll on this fall, and you’ll find us at Fiber Connect in May. The big one? Our 2026 User Summit is booked: four days of training, networking, and all things netTerrain.

## Lootbox Rewards

Fresh GN baseball caps just dropped in the Lootbox! Earn points for feedback, bug reports, or case studies—and trade them for swag, training sessions, or gift cards.

## Closing

Thanks for being part of netTerrain. Your feedback and ideas keep shaping what’s ahead. Until the next 10.x eagle lands...



# Roadmap: netTerrain 10.0

The eagle lands once again. netTerrain 10.0 kicks off the 10.x series—with it, we're honoring the creators behind the tech that powers netTerrain. Watch the ["What's New in 10.0" video here](#).

## Major netTerrain 10.0 Enhancements:

- **Time-series support for SNMP performance data:**  
Track variables - such as temperature, power, and bandwidth utilization over time with 12 months of reporting and charts.
- **Smarter, integrated discovery:**  
Discovery is now built into the netTerrain web interface, with integrated probes for smarter, cross-platform visibility.
- **Fresh GUI:**  
Refreshed interface for faster documentation..
- **SMS and notification engine:**  
SMS/email alerts when devices go offline or thresholds are exceeded.
- **Built-in IP Address Management (IPAM):**  
Track and manage IP addresses directly in netTerrain without needing an external tool.
- **SSO/SAML 2.0 support:**  
Enterprise-ready single sign-on integration.
- **AI-powered search (beta, Gemini LLM):**  
Context-aware search that helps you find data more quickly and accurately.
- **Custom dashboards & reporting (Grafana):**  
Customize dashboards and create advanced reports, powered by Grafana.
- **Numerous minor & Collector enhancements:**  
Check them out: [click here](#).
- **Upgrading is easy (no cost if you're under current maintenance):**  
log in to netTerrain as an administrator, access the Admin Console, and click 'Request software upgrade' or [open a support ticket](#).





# 2026 netTerrain User Summit



netTerrain's heading to Las Vegas! Join us October 11–14, 2026 at the New York - New York Hotel & Casino for our biggest User Summit yet.

Expect four full days of hands-on workshops, expert-led sessions, peer roundtables, and 1:1 clinics - plus complimentary certification training (a multi-thousand dollar value).

Attendees can book discounted on-site rooms and enjoy the convenience of staying just steps from the event. We're also planning a group outing (bring your ideas to our virtual meetups).

Whether you manage IT solo or lead a large team, the Summit delivers value: real-world strategies, fresh ideas, and tools you can put to work right away.

## Summit Highlights

- netTerrain certification workshops
- Sessions led by IT visualization experts
- Deep dives into automation, OSP & more
- Networking with peers and the GN team
- Group outing and evening events

## Early Bird Pricing:

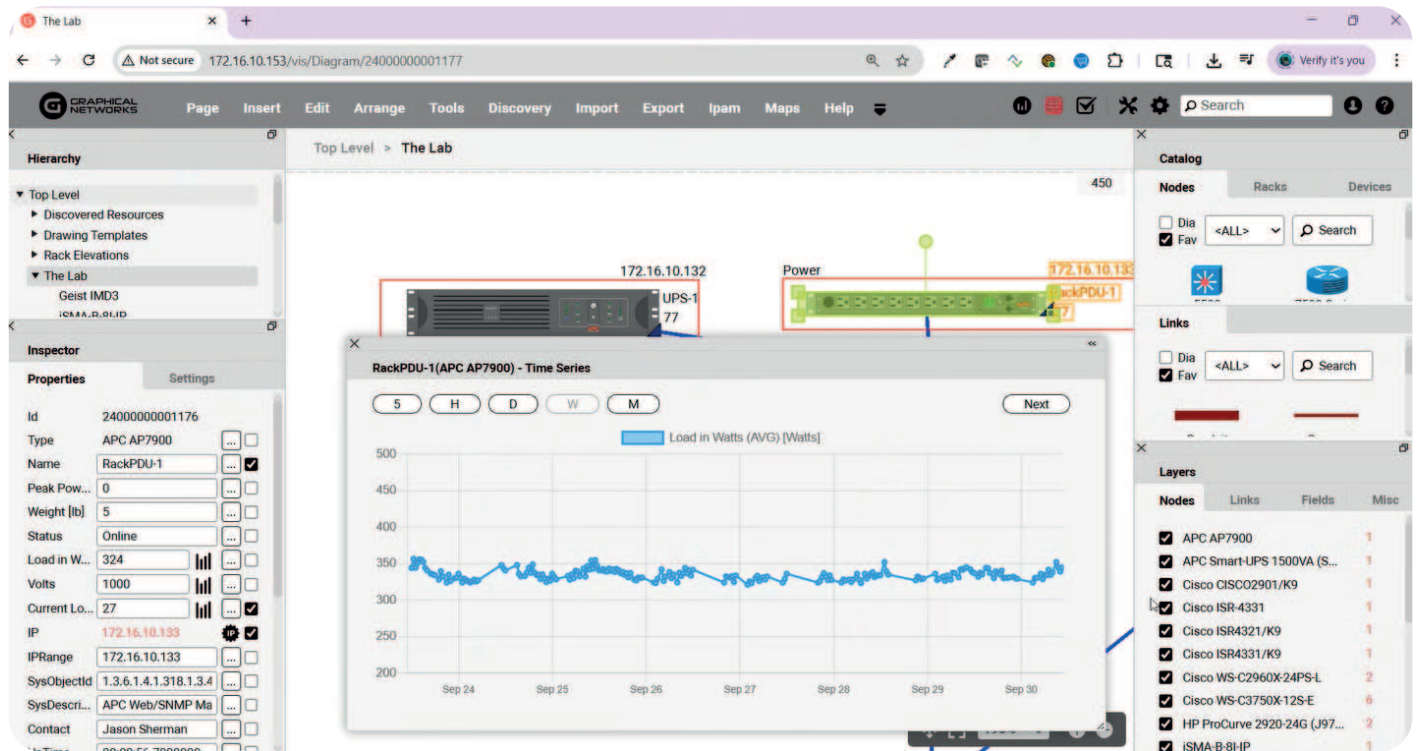
\$495 through March 1, 2026

Includes in-session meals, hotel discounts, and full session access.

Lock in your spot:

[click here for more details and to register.](#)

# Feature: Time-Series for SNMP Performance Data



New in netTerrain 10.0: track variables, such as temperature, power, and bandwidth trends—right inside of your netTerrain diagrams. Built-in charts highlight important patterns and keep up to 12 months of history.

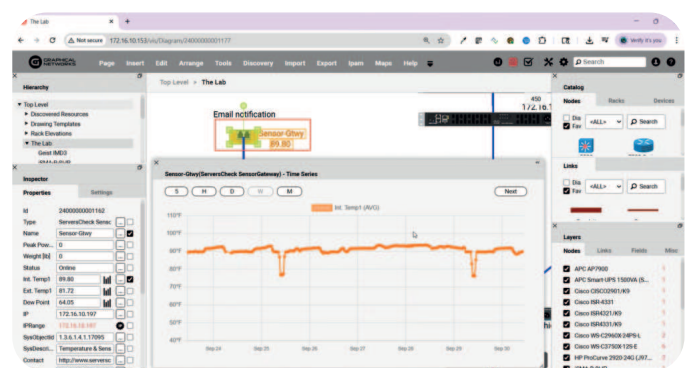
Where it fits: Available across netTerrain for SNMP-enabled objects.

Why it helps: Lack a monitoring tool? Juggling lighter/open-source utilities? Has the cost of your monitoring tool become prohibitively expensive?

You can now view performance in the same place you document.

How to launch it:

1. Create or edit an SNMP Discovery task and configure it.
2. Enable time-series for the object types you want in the Catalog.



Questions? Want help setting it up?

Reach out to support or open a ticket in the support portal.

# Customer Success Story:

## University of Notre Dame Streamlines IT



With football season is now in full swing, there's no better time than now to highlight how the University of Notre Dame manages a campus the size of a small city, including their legendary stadium. The IT team needed a clear way to map a large, dispersed network - to manage capacity, track changes, cut back on field trips, and preserve institutional knowledge.

After reviewing three vendors, the team chose netTerrain for its robust visualization, easy customization, and cost-effectiveness. Implementation was straightforward. A core group of five now uses netTerrain daily to manage fiber, saving time, increasing efficiency, and protecting knowledge as the team grows.



### **The Notre Dame team uses netTerrain to achieve:**

- Centralized, real-time documentation from enclosures to individual strands.
- End-to-end views: click from fiber patch panels down to ports and paths.
- Faster answers without multiple trips across campus.
- Accurate capacity tracking for planning and audits.
- Reduced knowledge loss and quicker onboarding for new hires.
- Web-based access for the entire IT staff.

"Before netTerrain, I could spend hours running around campus to track down answers. Now I have everything I need in five minutes, right from my desk."

*Jason Hilty, RCDD, Network Design Professional,  
University of Notre Dame*

Want to learn more about their project?  
[Read the full case study](#) or [watch the overview](#).

# Past & Upcoming Events

## Data Center World 2025

Our Gaithersburg crew -including Fred, Adriana, and Jason-recently hit the show floor at Data Center World in Washington, D.C. We reconnected with long-time users, met some new faces, and even got photobombed by a few former presidents (well...mas-cots). It was a great opportunity to showcase the latest in netTerrain and spark conversations about automation, visibility, and capacity planning.



## BICSI Presentation: End-to-End Fiber Tracing

In September, CEO Jan Dürnhöfer presented virtually to a sold-out BICSI crowd on how to ditch Excel and trace fiber the modern way. The talk covered inside/outside plant management, layout records, and how netTerrain helps reduce downtime and zombie cables. Attendees also earned CE credits.



## netTerrain User Virtual Series

We're continuing to host Skill Sessions and user meetups, including a new webinar in the works on E-911 compliance mapping. Check out our upcoming sessions: [click here](#).



## Fiber Connect 2026

For the first time ever, Graphical Networks will be exhibiting at Fiber Connect! Join us May 17–20, 2026, at the Gaylord Palms in Orlando, Florida. Visit Booth #1608 to meet Jason Sherman, Fred Koh, and Hannah Ash—and catch a live look at netTerrain in action. More info: [click here](#).





# Tracing the Path: netTerrain Word Search

This search was designed by none other than netTerrain user Sean B. (also known to us as "The Puzzle Master"). If you attended the 2024 User Summit, you'll remember Sean (where he wowed the room with his IT visualization chops).

There are 25 words hidden in the Puzzle Master's grid - all related to Graphical Networks and the world of netTerrain.

Solve it and email your answers to [adriana.lora@graphicalnetworks.com](mailto:adriana.lora@graphicalnetworks.com) to earn 100 Lootbox points plus a netTerrain swag bag.

B	Z	E	R	A	A	S	T	O	E	P	O	R	U	E	R
I	R	I	M	P	O	R	T	C	S	V	Q	D	E	L	E
X	E	O	O	A	Q	U	E	R	Y	U	A	U	T	L	T
E	P	T	W	O	U	R	D	B	A	S	W	P	A	Z	N
D	O	M	P	S	I	M	Y	A	H	N	E	L	L	K	E
I	R	H	J	L	E	U	A	B	T	X	D	I	P	N	C
S	T	A	T	S	E	R	O	R	P	A	A	C	M	O	A
T	N	X	C	W	R	A	O	R	G	R	B	A	E	I	T
U	O	B	A	Q	R	T	E	I	T	A	K	A	T	T	A
O	I	Q	T	D	C	S	G	T	Z	A	I	T	S	C	D
J	T	U	A	E	S	N	I	C	G	I	Z	D	C	E	B
U	U	Y	L	I	E	D	I	R	R	E	V	O	Q	N	Y
I	L	L	O	L	U	L	O	O	T	B	O	X	U	N	R
L	O	N	G	A	Q	U	I	R	X	Q	U	E	R	O	N
C	S	L	E	W	P	L	A	C	I	G	O	L	D	C	E

## Team Member Spotlight on Hannah

This edition's spotlight is on Hannah Ash, who's been integral to marketing at Graphical Networks since 2015. Normally, Hannah is the person who writes these spotlights -so we tried something different and had ChatGPT ask all the questions.

Hannah's role spans a wide range of projects: from case studies and copywriting to webinars and analytics. She loves the freedom and trust to dive into new projects and keep learning along the way. "The ability to grow is a big reason I love my job," she says.

Her favorite part of working with netTerrain? The people who use it. Hannah values our sharp, hands-on community of users and enjoys turning successes into stories that resonate for other IT teams. She loves seeing familiar names over the years-and looks forward to reconnecting with everyone at the Summit. Fun fact you might not know: Hannah is a serious Tetris enthusiast. She competes in a league and has her sights set on a world-record score. She's a regular at Funspot (the arcade featured in The King of Kong), which boasts a genuine Tetris machine.





# Lootbox Rewards Program: What's a Lootbox Point?

Lootbox Points are our way of saying thanks.

The Lootbox is a simple rewards program for GN users who help the community and spread the word.

Do something helpful - earn points - unlock loot.

A few ways to earn points:

- Share a customer testimonial.
- Report an issue (even the rare ones).
- Contribute to a case study (e.g., the BWI study).

Your efforts improve netTerrain and guide new users.

Redeem points for:

- GN swag (shirts, hoodies, new GN baseball caps).
- netTerrain training classes.
- Big-ticket goodies like an iPhone or Amazon gift cards.

You help Graphical Networks and our users grow; we send perks your way.

[Explore the loot here.](#)



## Conclusion

From the 10.0 launch to new customers, new hires, and a packed events calendar, it's been a standout quarter - and the momentum keeps building.

We're already working on 10.1, lining up more Skill Sessions, and gearing up for the 2026 User Summit. Your feedback drives what's next for netTerrain, and we're grateful for this sharp and engaged community.

Until the next 10.x series eagle lands again, thanks for flying on this journey with us - we'll see you in the matrix ([support portal](#), [online user events](#), [the lootbox](#), etc.)

Happy documenting!