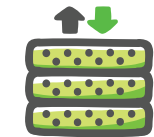




netTerrain DCIM

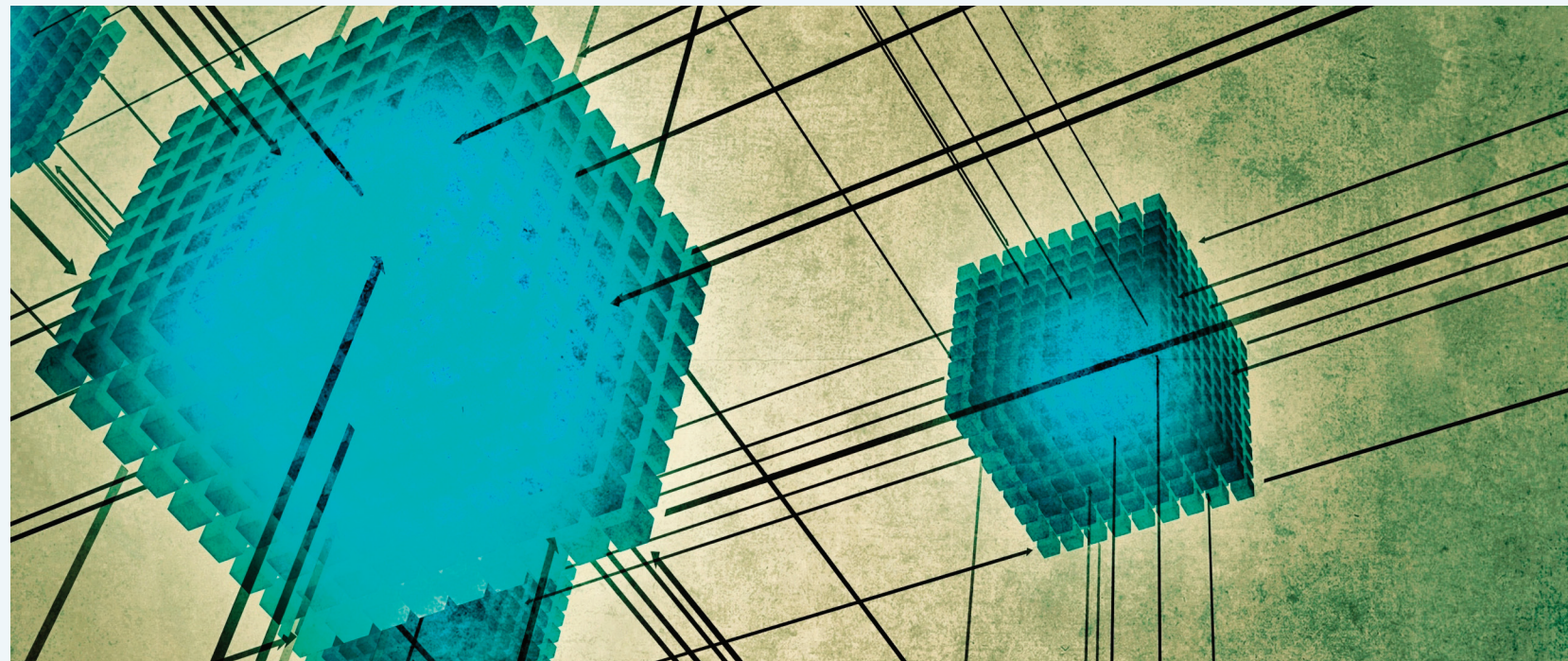


With today's quest to meet ever growing and changing IT, the Data Center has become a complex ecosystem. Data center consolidation, virtualization, cloud computing, green energy and mobility are a few of the many dynamics that are changing the Data Center landscape. They also present challenges for IT staff to manage assets more efficiently and with lower costs while ensuring high availability and reliability. If you could easily automate and document all of your IT assets - including physical space, networks, racks, devices, subcomponents and links - into a centralized repository, you'd have the insights to manage your entire IT infrastructure more efficiently. With **Graphical Networks' netTerrain DCIM**, you can get the power to simplify the management of your data center and improve how you can prepare for and respond to business changes.

netTerrain DCIM is a next-generation, enterprise-level Data Center Infrastructure Management software that provides the insights to drive data center performance. **netTerrain DCIM** provides a centralized, multi-user, web-based visualization of your entire IT infrastructure. Easy-to-use navigation provides powerful hierarchical and subcomponent diagrams of data centers, IT inventory and networks. You gain greater visibility, control and governance to improve capacity planning and change management, isolate troubleshooting and reduce downtime, and ensure service level availability.

With netTerrain DCIM, you can:

- ✓ Optimize asset performance and investments
- ✓ Lower risks and costs of ownership
- ✓ Improve governance and compliance
- ✓ Ensure service availability with greater confidence
- ✓ Deliver new levels of operational and business value



Get Visual. See netTerrain DCIM in Action Today.

Contact us to request a demo.

GraphicalNetworks.com

4800 Hampden Ln,
Bethesda, MD 20814

Phone 301.947.6714
info@graphicalnetworks.com
GraphicalNetworks.com



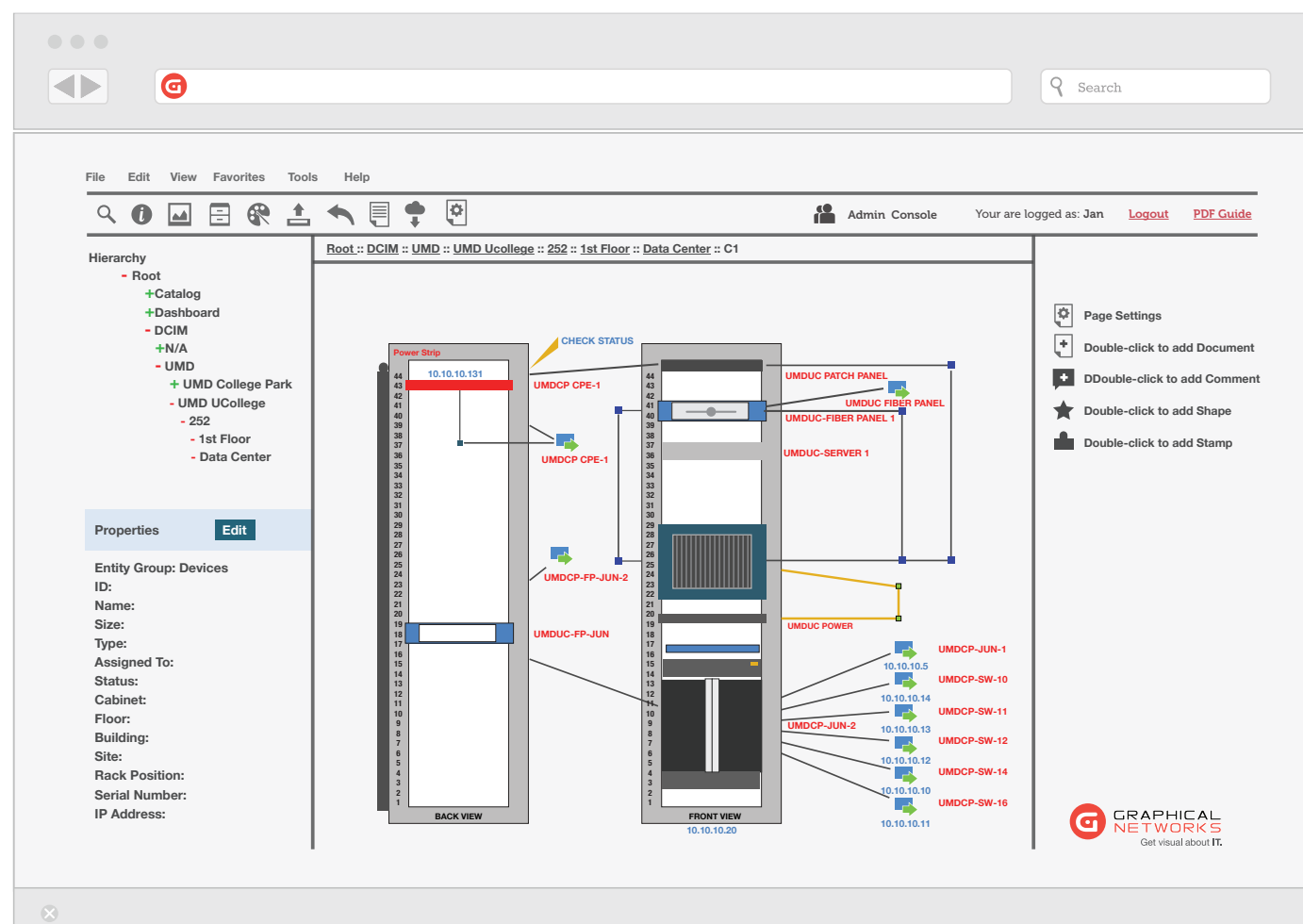
netTerrain DCIM Highlights

- Automate, document and visualize Data Centers, IT inventory and Networks from a central, graphical place.
- Optimize asset performance and capacity planning with detailed inventory and audit trails.
- Troubleshoot problems and reduce downtime by isolating root causes and problems.
- Reduce risks and ensure compliance with better control and governance.
- Obtain higher return on investments by extending the life of data center assets and improving asset utilization.
- Deliver business value with improved service availability and reliability.
- Consolidate and share knowledge in a multi-user, single repository.

Automate, Visualize and Optimize Your Data Center

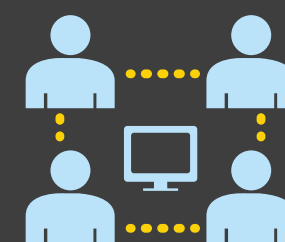
netTerrain DCIM's feature-rich, robust visualization capabilities provide a smarter way to gain IT asset intelligence so that you can deliver unparalleled business value.

- 100% web-based, real-time, data-driven graphical diagrams to increase enterprise-wide accessibility to mission-critical data.
- Scalable multi-user, centralized repository using SQL Server.
- Easy to use template-based vendor specific device catalog to automate data asset inventories.
- End-to-end data center sites spanning regions, buildings, floors, racks, devices, cabling, circuit, and resource visualization.
- On-demand connectivity views for "what-if" scenarios and data/power troubleshooting.
- netTerrain integration toolkit with built-in adapters.
- Includes netTerrain Logical's powerful network documentation platform capabilities with netTerrain Enterprise license option.



netTerrain DCIM Features

- 100% web based, multi-user, multi-browser
- Simple; easy-to-use
- Flexible; tailorable reporting engine
- Dynamic physical views
- Template-based device catalog
- Speed data entry with built-in adapters and integration toolkit
- Advanced search and drill down features
- Complete database audit trail
- Health dashboard that displays DCIM and network KPIs



Software

MS SQL Server 2008
 Windows Server 2008
 MS IIS 6.0 or better, .NET Framework 3.5 or better

Hardware

Intel i7 Processor
 50GB Free Space
 8GB RAM